

IKARIA

EASY LIVING

PREMIUM ACTIVE SENIOR LIVING APARTMENTS
IN SHANTIGRAM TOWNSHIP



THOUGHTFULLY CRAFTED FOR EASY LIVING

Ikaria invites you to discover a life after 55. Nestled in the peaceful surroundings of Shantigram Township, it is a place where your peace of mind is at the heart of it all. It's not just a home, but a community filled with comfort and connection.





LIFE AT IKARIA

Ikaria takes inspiration from the 'Blue Zones' of the world - regions where people live longer, happier, and healthier. These Blue Zones have shaped Ikaria's three key pillars:

CARE, COMFORT AND COMMUNITY.



CARE

From medical assistance to daily services, thoughtful care is around the corner.*

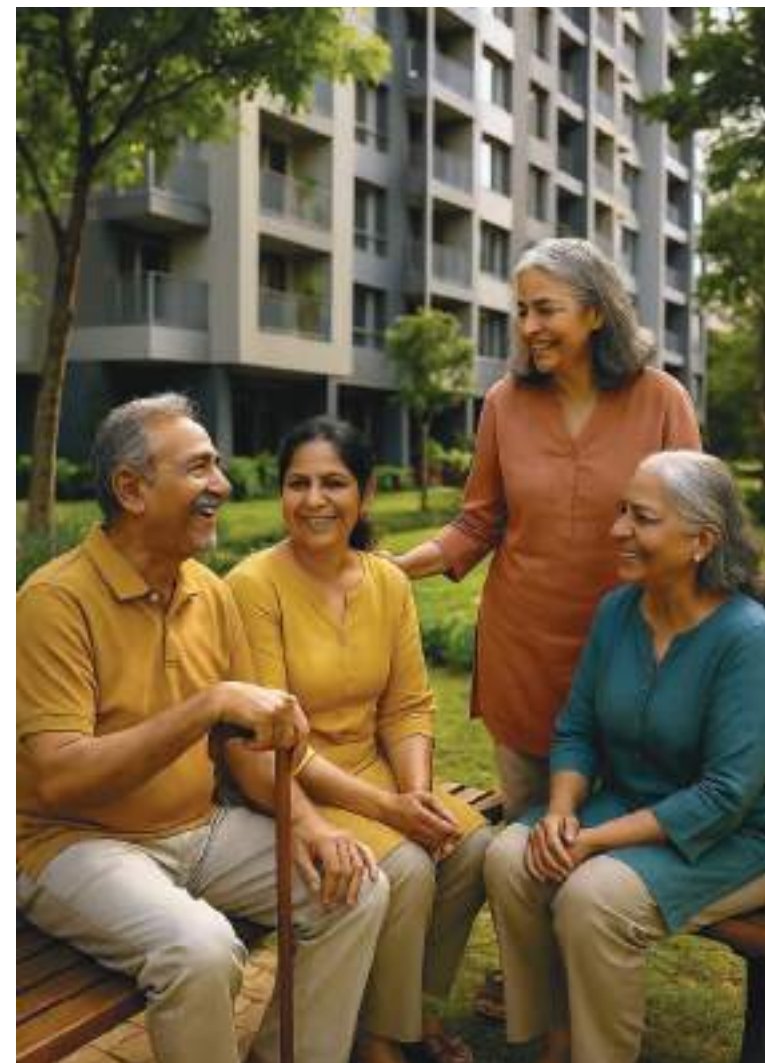
COMFORT

At Ikaria we understand the burden of managing day-to-day life. Our approach focuses on services and aims to provide comfort and convenience to our residents.

COMMUNITY

Whether it's a shared meal, a quiet chat in the garden, or a new hobby, you'll have something to look forward to - and someone to share it with.

THIS IS EASY LIVING.



*Project will tie up with independent service providers who have experience in delivering lifestyle and facility management services to ensure comfort and convenience for residents.



**WHERE LIFE
MOVES
AT YOUR
OWN PACE**



DISCOVER NEW PASSIONS AND EXPLORE WHAT BRINGS YOU JOY

At Ikaria, each day unfolds at your own pace, with the freedom to choose how you spend your time.

Whether it's staying active, enjoying a quiet moment, or simply exploring something new, the setup is designed to support you and your daily needs.



1. Adani Corporate House
2. The Belvedere Golf & Country Club
3. Shoppers' Plaza
Bank | Pharmacy | Grocery
4. Cricket Ground
5. Jain Temple
6. Swaminarayan Temple

Upcoming:

7. Center Point
Retail | Movie Theater | Dining
8. Shiv Temple
9. Medico House

AT HOME IN SHANTIGRAM

Ikaria is part of Shantigram, one of Ahmedabad's most thoughtfully planned townships. With open spaces, tree-lined roads, and a vibrant yet peaceful community, Shantigram brings together all the comforts of a well-rounded life.

From refreshing morning walks to peaceful evenings at the nearby club or temple, each day brings new opportunities for comfort, connection, and well-being.

KD Hospital	4.7km
Ahmedabad Airport	20.3km
Sabarmati Railway Station	14.9km
SP Ring Road	4.7km
Iskcon Cross Roads	17.8km



Jain Temple

The Belvedere Club

Cricket Ground

Shoppers Plaza

IKARIA



**IT'S TIME TO
ENJOY THE
LITTLE
MOMENTS**



CRAFTED FOR YOUR EASE

At Ikaria, thoughtful design makes everyday living simpler and more comfortable.

Homes are built to support your independence, with features that offer comfort, safety, and ease of movement.

Whether you're relaxing in your balcony or heading to the dining area, Ikaria is thoughtfully designed.





SENIOR-FRIENDLY FEATURES THAT SUPPORT DAILY EASE AND MOVEMENT

- Handrails across corridors
- Skid-resistant flooring throughout bathrooms
- Step-free apartment layout to avoid trip hazards
- Larger window openings to maximise light

SAFETY AND SUPPORT FEATURES THAT BLEND INTO YOUR HOME SEAMLESSLY

- Installed emergency panic alarm
- Installed smoke and gas sensors
- Wheelchair-friendly planning
- Foldable shower seat and grab bars in primary washroom



YOUR DAY AT IKARIA

An active start to your day



*Wholesome breakfast
at the dining area*



*Sun-lit strolls through
landscaped gardens*

*Time to read,
relax and recharge*



*A quick round of golf
at the nearby club*

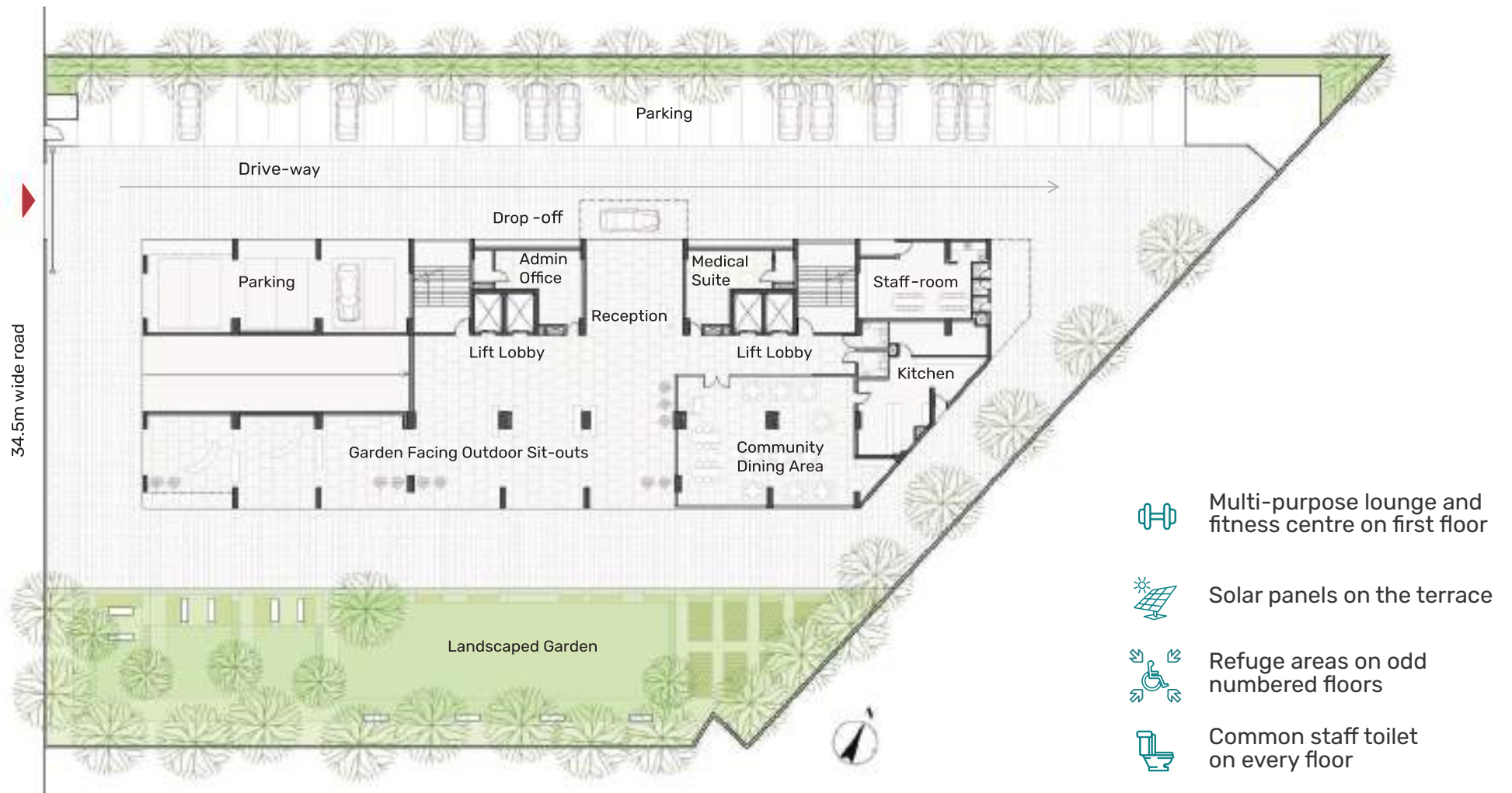
Evenings full of play with the community



**EVERY DAY, EASY.
EVERY MOMENT,
YOURS.**

GROUND FLOOR LAYOUT

The heart of community life – with open gardens, sit-outs, dining areas, medical suite and staff support all within easy reach.





COMMUNITY DINING AREA

**FROM COMMUNITY MEALS
TO FITNESS ROUTINE, IKARIA
IS DESIGNED TO BRING EASE
INTO YOUR DAY.***

- Dine with friends in the community kitchen
- Enjoy a fitness routine in our fitness centre or in the landscape garden
- Walk out into landscaped gardens and sit-outs
- Enjoy hassle-free housekeeping and maintenance

THIS IS EASY LIVING.

LANDSCAPED GARDEN



*Project will tie up with independent service providers who have experience in delivering lifestyle and facility management services to ensure comfort and convenience for residents.



1BDR & 2BDR APARTMENTS

1 BDR A

Total Area (Carpet + Balcony) :

67.22 (sq.m)

723.28 (sq.ft)

1 BDR B

Total Area (Carpet + Balcony) :

59.89 (sq.m)

644.41(sq.ft)

2 BDR (A-B-C-D)

Total Area Range (Carpet + Balcony) :

83.37 (sq.m) – 897.06(sq.ft)

to 83.76 (sq.m) 901.26 (sq.ft)





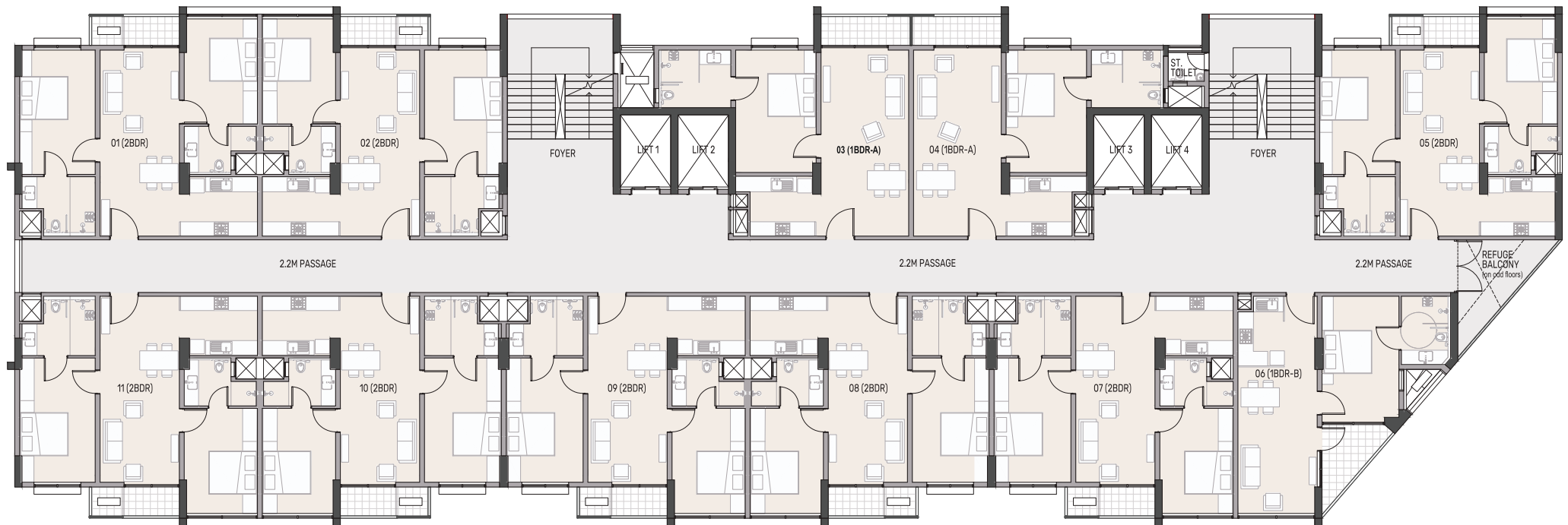
1ST FLOOR LAYOUT

Senior-friendly residences begin here, connected by wide, well-lit corridors and easy access to amenities.



2ND - 13TH FLOOR LAYOUT

Each level is designed to offer privacy within a community setting, with elevators, refuge balconies and ample circulation space.



APARTMENT LAYOUT

2 Bedroom Apartment

1. Living & Dining: 10'9" x 25'3"
2. Kitchen: 10'6" x 8'0"
3. Primary Bedroom*: 10'6" x 17'0"
4. Primary Toilet*: 9'9" x 7'9"
5. Bedroom: 10'0" x 14'3"
6. Bedroom Toilet: 9'9" x 6'6"
7. Balcony: 7'6" x 4'0"



TYPE	RERA CARPET AREA	RERA BALCONY AREA	TOTAL AREA
2 BDR – A	78.99 sq.m	4.38 sq.m	83.37 sq.m
	849.93 sq.ft	47.13 sq.ft	897.06 sq.ft
2 BDR – B	79.76 sq.m	4.38 sq.m	84.14 sq.m
	858.22 sq.ft	47.13 sq.ft	905.35 sq.ft
2 BDR – C	78.75 sq.m	4.38 sq.m	83.13 sq.m
	847.35 sq.ft	47.13 sq.ft	894.48 sq.ft
2 BDR – D	79.38 sq.m	4.38 sq.m	83.76 sq.m
	854.13 sq.ft	47.13 sq.ft	901.26 sq.ft

*Wheelchair-friendly

Spacious, bright and senior-friendly.



2 Bedroom Apartment

Ideal for individuals or couples above 55.



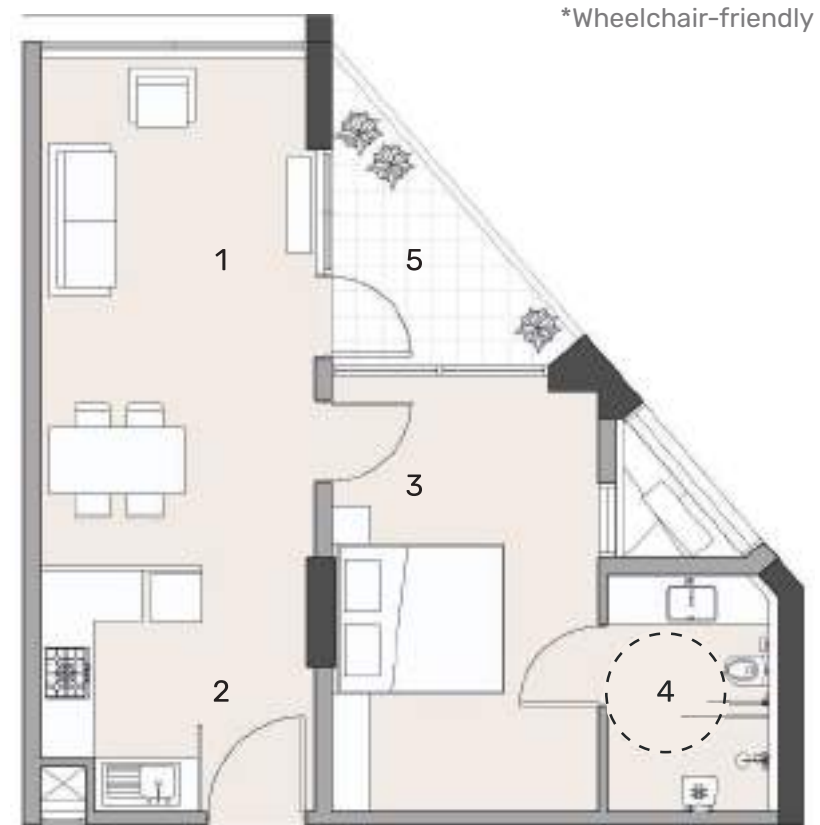
1 Bedroom Apartment - Type B



1 Bedroom apartment (1 BDR A)

1. Living & Dining: 12'0" x 25'3"
2. Kitchen: 9'6" x 8'0"
3. Primary Bedroom*: 11'0" x 16'9"
4. Primary Toilet*: 9'9" x 7'9"
5. Balcony: 12'0" x 4'0"

RERA Carpet Area:
62.78 (sq.m) - 675.51 (sq.ft)
RERA Balcony Area:
4.44 (sq.m) - 47.77 (sq.ft)
Total Area: 67.22 (sq.m) - 723.28 (sq.ft)



1 Bedroom apartment (1 BDR B)

1. Living & Dining: 10'9" x 20'0"
2. Kitchen: 6'6" x 9'6"
3. Primary Bedroom*: 10'6" x 16'9"
4. Primary Toilet*: 6'9" x 9'3"
5. Balcony: 12'3"/14'9" | /8'6"/1'6"

RERA Carpet Area:
53.94 (sq.m) - 580.39 (sq.ft)
RERA Balcony Area:
5.95 (sq.m) - 64.02 (sq.ft)
Total Area: 59.89 (sq.m) - 644.41 (sq.ft)

An elderly couple is standing on a balcony, looking out at a scenic view. The man, on the left, has a white beard and glasses, and is wearing a green sweater. He is holding a yellow mug with both hands. The woman, on the right, has short grey hair and is wearing a grey cardigan over a pink top. She has her arms crossed and is leaning on the glass railing. The balcony has a glass railing and large glass doors in the background. The scene is bathed in warm, golden light, suggesting late afternoon or early morning. The overall mood is peaceful and content.

**EASY LIVING
FOR YEARS
TO COME**



Adani Realty is the real estate arm of the Adani Group – one of India's leading infrastructure and development companies. With a focus on 'Growth with Goodness', Adani Realty is shaping modern India through thoughtfully designed residential, commercial, and social infrastructure projects. Their township, Shantigram, is one of Gujarat's most recognised integrated living destinations.



Collated Ventures is a new-age real estate company focused on creating places that bring people together. Led by Shaan Zaveri, Gaurav Gadhecha and Aniruddh Jhaveri, the firm develops purpose-built spaces for senior living, retail, commercial, co-working, and more – each shaped by a people-first approach. Our developments are rooted in service, functionality and long-term value for the communities they serve.



Opp. Shoppers Plaza, Shantigram Township,
Nr. Vaishnodevi Circle, SG Highway, Ahmedabad – 382421

+91 9586000593/94 | sales@collated.in | www.ikarialiving.in



RERA QR RAA10359/240622 | www.gujrera.gujarat.gov.in

Disclaimer: The details mentioned in this brochure are for information purposes only and do not constitute an offer. The visuals and information contained herein are for information purposes only. The visuals contained marked as "generic image/stock image" and other visuals /image /photographs are general images and do not have any correlation with the project. The computer-generated images, walkthroughs and render images are the artist's impression and are an indicative of the actual designs of proposed development in different phases. These are not actual project images and should not be construed as such. The designs, dimensions, cost, facilities, plans, specifications, furniture, accessories, and other details shown in the images are only indicative in nature and are only for the purpose of illustrating/indicating a possible layout and do not form part of the standard specifications/amenities/services to be provided in the apartment. Recipients are advised to use their discretion in relying on the information/amenities described/- shown therein. All specifications of the apartment shall be as per the final agreement between the Parties. No information given in this Brochure creates a warranty or expand the scope of any warranty that cannot be disclaimed under the applicable laws. The information in this brochure is presented as general information. Nothing in the brochure should be misconstrued as advertising, marketing, booking, selling or an offer for sale or invitation to purchase a unit in any project by the Company. While enough care is taken by the Company to ensure that information in the brochure is up to date, accurate and correct, any interested party should verify all the information including designs, plans, specifications, facilities, features, payment schedules, terms of sales etc. independently with the Company prior to concluding any decision for buying in the project. The Company is not responsible for the consequences of any action taken by the recipients relying on such material/ information on this brochure without independently verifying with the Company. The sale is subject to terms of application form. All specifications of the apartment and the project shall be as per the final agreement between the parties. This Brochure is subject to such amendments as may be deemed necessary by the Company. The Company shall be under no obligation to inform of the amendments to the brochure. By using or accessing this Brochure, the recipients agree with the Disclaimer without any qualification or limitation.