

IKARIA

EASY LIVING

1 and 2 bedroom senior-friendly apartments

 [Shantigram, Ahmedabad](#)

REIMAGINING SENIOR LIVING

Purpose-designed residences for easy living in an urban setting



Artistic impression



THE IKARIA LIFE

Ikaria is inspired from the 'Blue Zones' – a handful of regions around the world where people tend to live a longer, healthier and happier life. The essence of the Blue Zones lies in 3 pillars:

COMMUNITY CONNECTIONS

Creating a community where people enjoy each other's company

MOVEMENT-FRIENDLY

Having access to open spaces and encouraging a daily active lifestyle

WELLNESS FIRST

Making diet, nutrition and hygiene a priority for the neighbourhood

The Ikaria life strives to bring this essence of the Blue Zones at your doorstep and help seniors create a like-minded community for growth and joy, without the everyday hassle. A space to embrace your passions and live an easy life, at your own pace.



EASY LIVING AT IKARIA

Our Approach

At Ikaria, we understand the burdens of managing day-to-day life. Our service-focused approach aims to provide comfort and convenience for Ikaria's residents and help them lead a quality life.

We aim to do this through our associations with service partners offering fixed as well as customisable service and care packages. Routine tasks like housekeeping and home maintenance are addressed through our service partnerships at Ikaria. Specialised services like medical assistance, nutritious home like meals and personalised care come together for Easy Living.

THE IKARIA ADVANTAGE

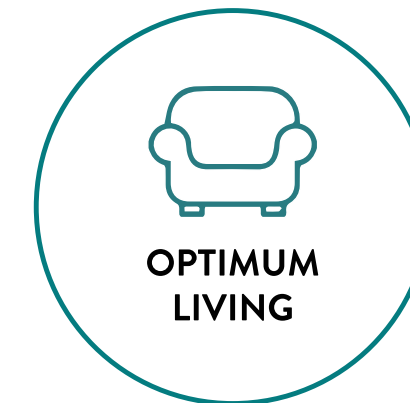
A host of services and benefits for your care



- ▶ Shoppers' Plaza and Belvedere Club*
- ▶ Jain temple and international school
- ▶ Sports facilities, jogging and cycling tracks



- ▶ Common and individual housekeeping, and facility for maintenance and management
- ▶ Concierge, valet, activity coordinator, and other on-demand services*
- ▶ Community dining and kitchen with optional meal packages*



- ▶ Serene and tranquil environment
- ▶ Open spaces with landscaped gardens
- ▶ Thoughtfully planned infrastructure
- ▶ Diverse community



- ▶ Panic alarm for emergency response
- ▶ CCTV surveillance and controlled entry gates
- ▶ Step-free flooring to avoid tripping hazards
- ▶ Barrier-free with skid-resistant flooring



- ▶ Dedicated medical suite with a nursing attendant
- ▶ Medical and emergency centre in close proximity*
- ▶ Fitness Zone

*On chargeable basis



* Line map not to scale, locations mentioned are indicative

THE SHANTIGRAM TOWNSHIP

1. Adani Corporate House
2. Shoppers' Plaza
3. Cricket Ground
4. Adani International School
5. The Belvedere Country Club
6. Jain Temple


AROUND
600 ACRES


OVER 30,000
TREES


HOME TO 3500+
FAMILIES

Perfectly nestled between Ahmedabad and Gandhinagar, the Adani Shantigram Township creates the right environment for the Ikaria philosophy of Easy Living. Ikaria is conveniently located near the residential cluster, across the Shopper's Plaza and in close proximity to the Belvedere Club as well as recreational parks.



Artistic impression

THOUGHTFULLY PLANNED. PURPOSE-DESIGNED.

- **Senior-Friendly Minimal Design**

With a function-driven approach, Ikaria strives to provide thoughtfully designed spaces for a relaxed life combined with hassle free living for seniors.

- **Premium Quality, Local Roots**

At Ikaria, our emphasis on high-quality locally sourced materials helps make your home durable and easy to maintain.

- **One With Nature**

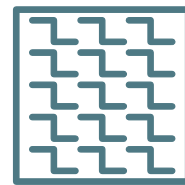
Adani Shantigram's lush green location brings you close to nature while being in urban surroundings. Our design lays importance on natural light and ventilation.

SENIOR-FRIENDLY FEATURES

Helping you take care of daily challenges



Wheelchair and
stretcher-friendly elevators



Skid-resistant flooring in bathrooms
and common passageways



Shower seat and grab
bars in primary washroom



Installed panic alarm
emergency response system



Large windows and
door openings



Step-free flooring to avoid
trip hazards



Hand rails and benches in
common passageways

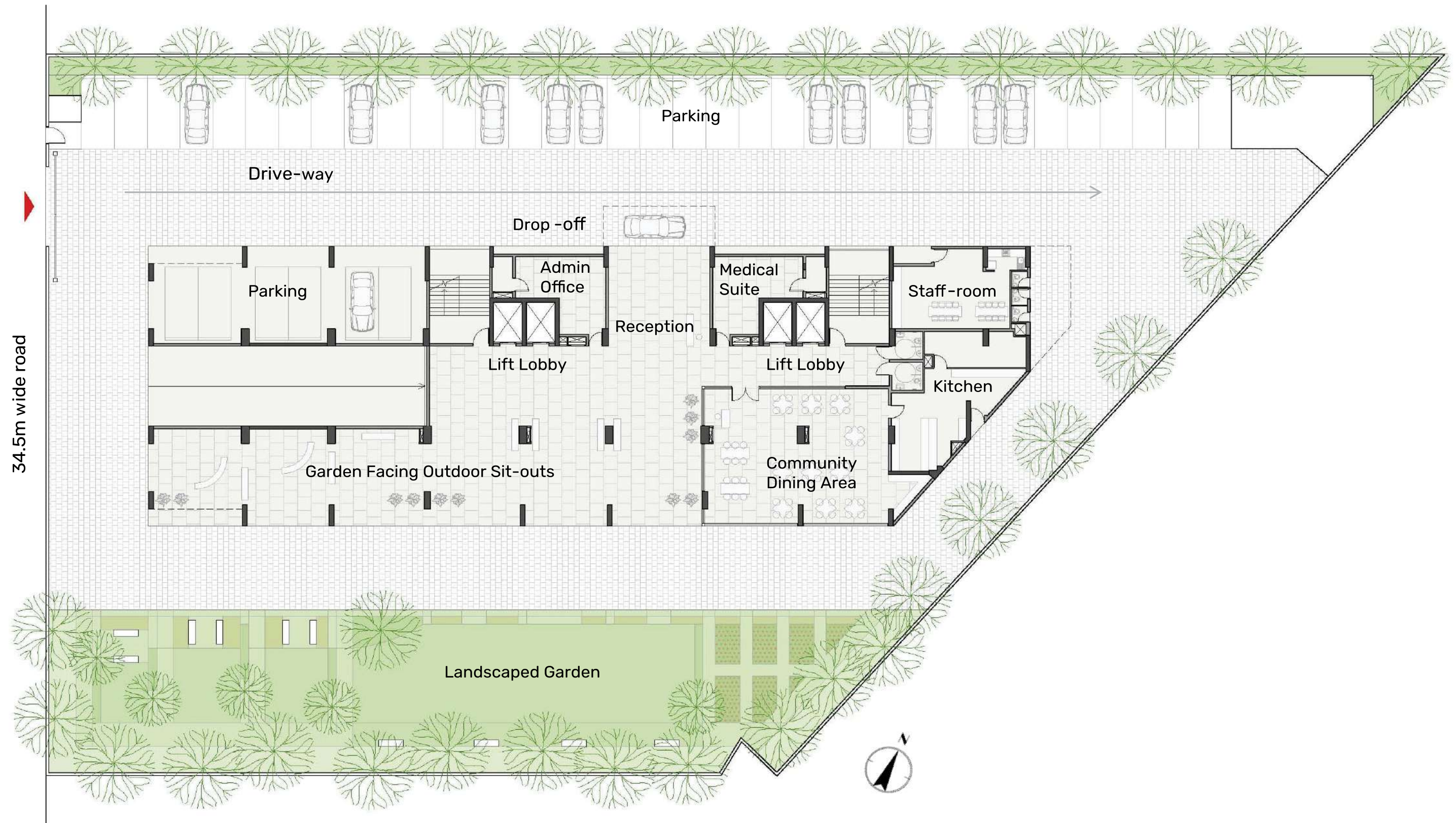


Designed for
wheelchair use



Installed heat, smoke
and gas sensors

GROUND FLOOR LAYOUT



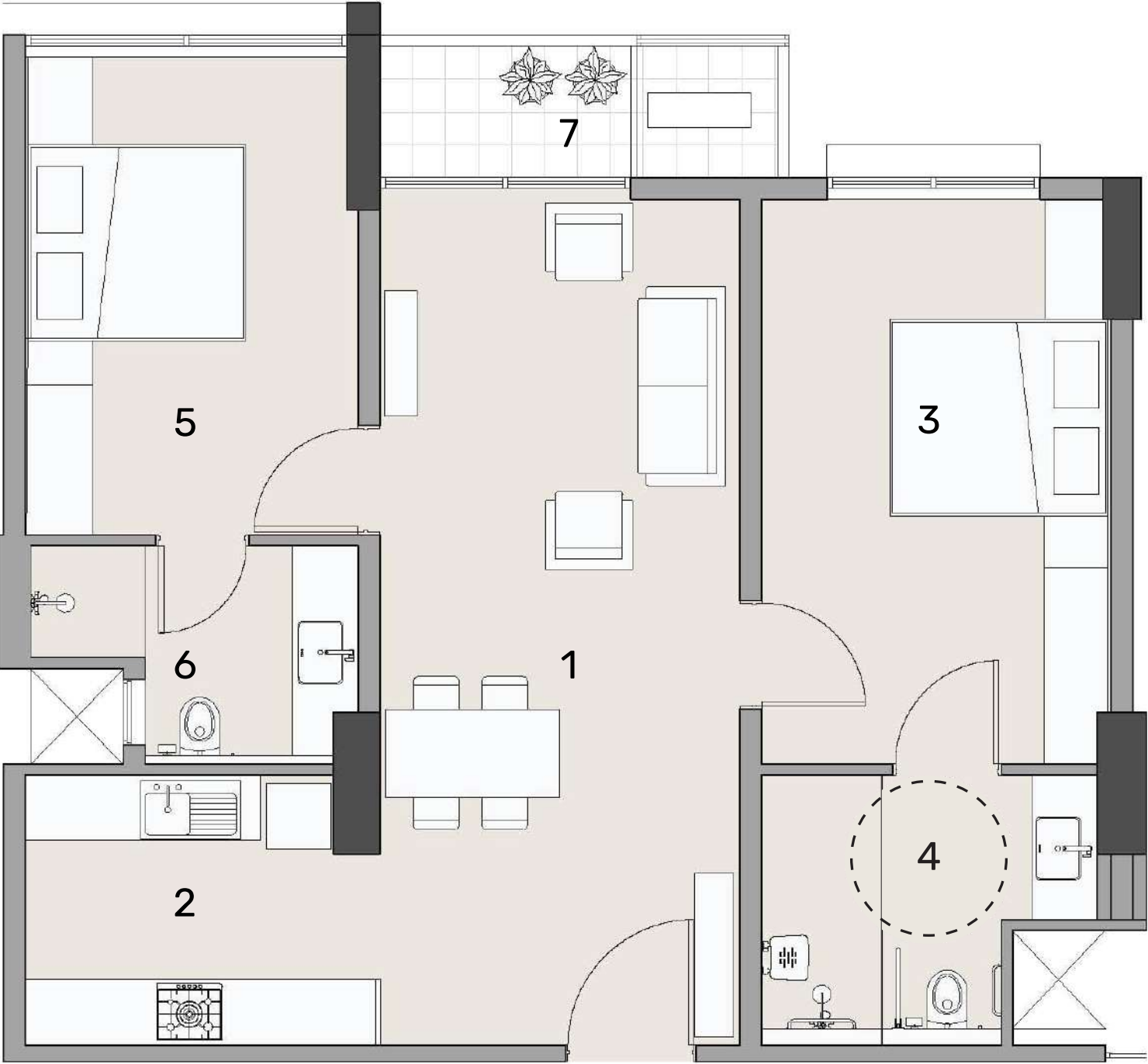
1ST FLOOR LAYOUT



2ND - 13TH FLOOR LAYOUT



APARTMENT LAYOUT

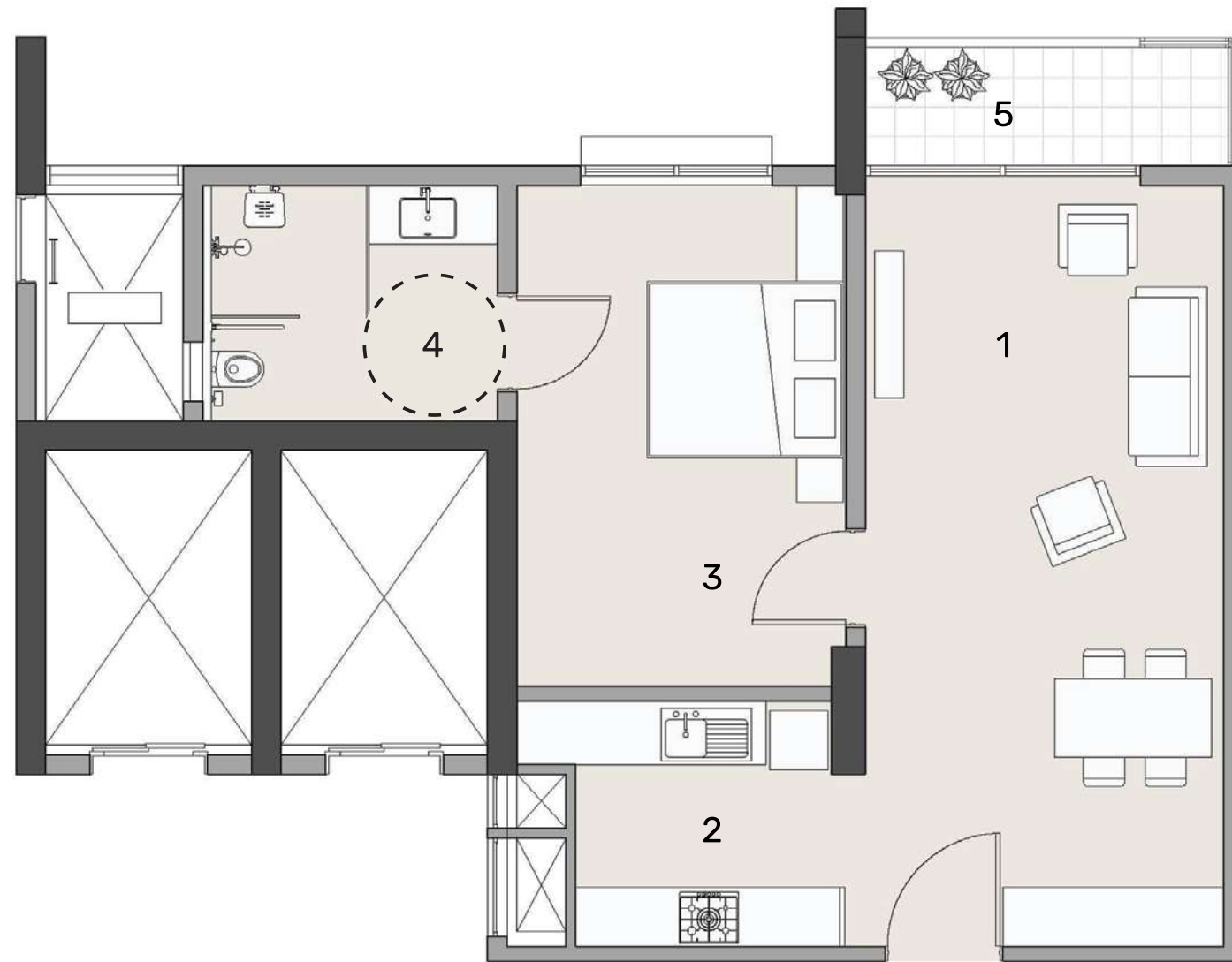


2 Bedroom Apartment

- 1. Living & Dining: 10'9" x 25'3"
- 2. Kitchen: 10'6" x 8'0"
- 3. Primary Bedroom*: 10'6" x 17'0"
- 4. Primary Toilet*: 9'9" x 7'9"
- 5. Bedroom: 10'0" x 14'3"
- 6. Bedroom Toilet: 9'9" x 6'6"
- 7. Balcony: 7'6" x 4'0"

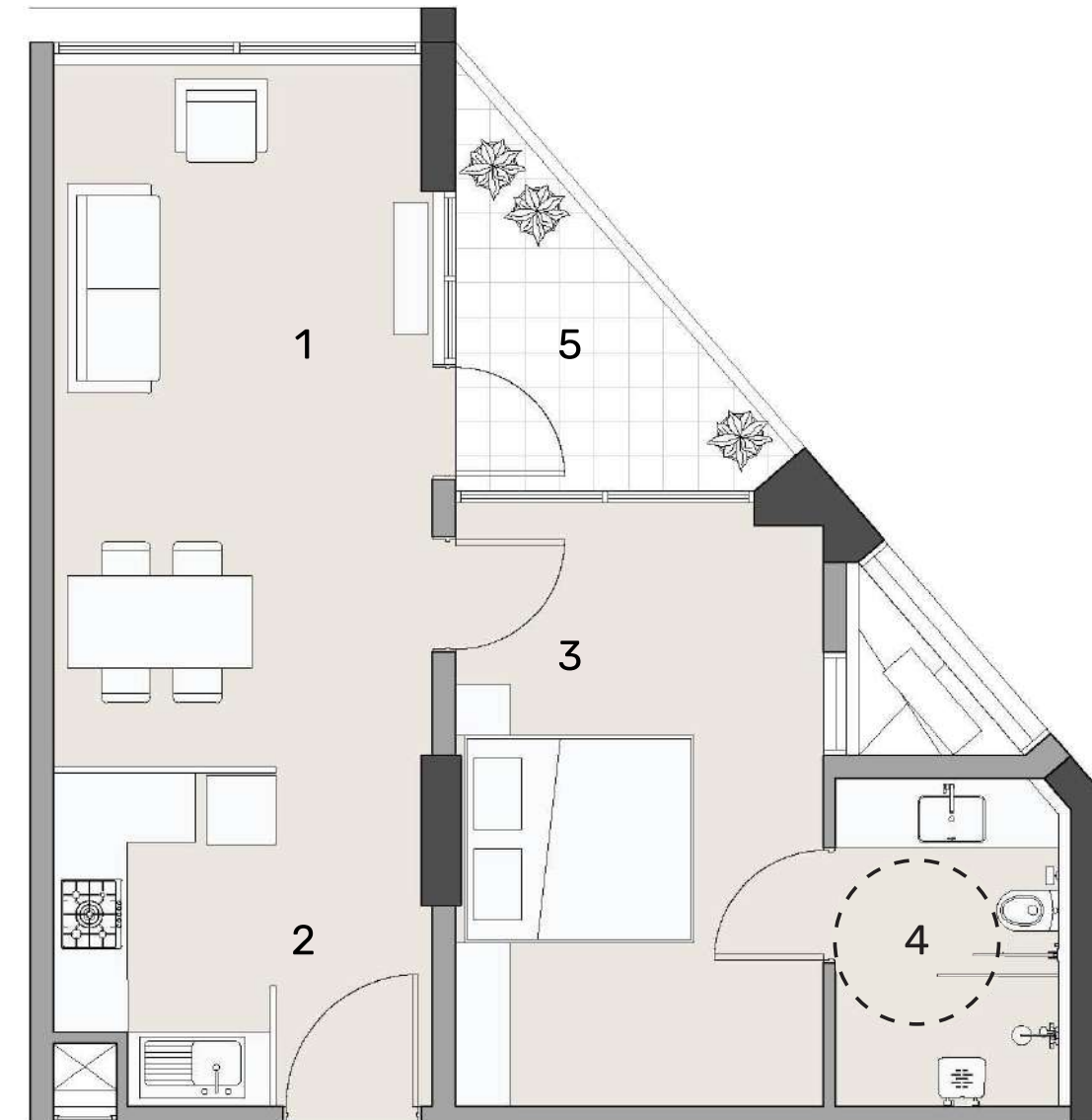
TYPE	RERA CARPET AREA	RERA BALCONY AREA	TOTAL AREA
2 BDR – A	78.99 sq.m	4.38 sq.m	83.37 sq.m
	849.93 sq.ft	47.13 sq.ft	897.06 sq.ft
2 BDR – B	79.76 sq.m	4.38 sq.m	84.14 sq.m
	858.22 sq.ft	47.13 sq.ft	905.35 sq.ft
2 BDR – C	78.75 sq.m	4.38 sq.m	83.13 sq.m
	847.35 sq.ft	47.13 sq.ft	894.48 sq.ft
2 BDR – D	79.38 sq.m	4.38 sq.m	83.76 sq.m
	854.13 sq.ft	47.13 sq.ft	901.26 sq.ft

* Wheelchair friendly



1 Bedroom apartment (1 BDR A)

1. Living & Dining: 12'0 x 25'3"	RERA Carpet Area:
2. Kitchen: 9'6" x 8'0	62.78 (sq.m) - 675.51 (sq.ft)
3. Primary Bedroom*: 11'0 x 16'9"	RERA Balcony Area:
4. Primary Toilet*: 9'9" x 7'9"	4.44 (sq.m) - 47.77 (sq.ft)
5. Balcony: 12'0 x 4'0	Total Area: 67.22 (sq.m) - 723.28 (sq.ft)



1 Bedroom apartment (1 BDR B)

1. Living & Dining: 10'9" x 20'0	RERA Carpet Area:
2. Kitchen: 6'6"x 9'6"	53.94 (sq.m) - 580.39 (sq.ft)
3. Primary Bedroom*: 10'6" x 16'9"	RERA Balcony Area:
4. Primary Toilet*: 6'9" x 9'3"	5.95 (sq.m) - 64.02 (sq.ft)
5. Balcony: 12'3"/14'9" /8'6"/1'6'	Total Area: 59.89 (sq.m) - 644.41 (sq.ft)

* Wheelchair friendly



All the above images are an artistic impression

Garden and pedestrian friendly walkway



All the above images are an artistic impression

Fitness Zone



All the above images are an artistic impression

Reception Area



All the above images are an artistic impression

Community Dining



All the above images are an artistic impression

Semi-open Recreation Area

ABOUT US

Collated

Collated's core philosophy is to reimagine real estate to create a platform for shared economy focusing on the concept of live, work and play. Led by Shaan Zaveri, Gaurav Gadhecha, Aniruddh Jhaveri and powered by a dynamic team.



Adani Realty is the real-estate arm of Adani Group, one of India's leading infrastructure and development conglomerates.

A project by Alinea Properties LLP.



Project Address: Plot No. R5F2, Opp. Water Lilly, Shantigram Township,
Near Vaishnodevi Circle, S. G. Highway, Ahmedabad - 382421

Contact: +91 95860 00593/94 | Email: sales@collated.in | www.ikarialiving.in



Scan to watch Ikaria video

PR/GJ/AHMEDABAD/DASKROI/AUDA/RAA10359/240622 | <https://gujrerar1.gujarat.gov.in>

Disclaimer: The details mentioned in this brochure are for information purposes only and do not constitute an offer. The visuals and information contained herein are for information purposes only. The visuals contained marked as "generic image/stock image" and other visuals /image /photographs are general images and do not have any correlation with the project. The computer-generated images, walkthroughs and render images are the artist's impression and are an indicative of the actual designs of proposed development in different phases. These are not actual project images and should not be construed as such. The designs, dimensions, cost, facilities, plans, specifications, furniture, accessories, and other details shown in the images are only indicative in nature and are only for the purpose of illustrating/indicating a possible layout and do not form part of the standard specifications/amenities/services to be provided in the apartment. Recipients are advised to use their discretion in relying on the information/amenities described/- shown therein. All specifications of the apartment shall be as per the final agreement between the Parties. No information given in this Brochure creates a warranty or expand the scope of any warranty that cannot be disclaimed under the applicable laws. The information in this brochure is presented as general information. Nothing in the brochure should be misconstrued as advertising, marketing, booking, selling or an offer for sale or invitation to purchase a unit in any project by the Company. While enough care is taken by the Company to ensure that information in the brochure is up to date, accurate and correct, any interested party should verify all the information including designs, plans, specifications, facilities, features, payment schedules, terms of sales etc. independently with the Company prior to concluding any decision for buying in the project. The Company is not responsible for the consequences of any action taken by the recipients relying on such material/information on this brochure without independently verifying with the Company. The sale is subject to terms of application form. All specifications of the apartment and the project shall be as per the final agreement between the parties. This Brochure is subject to such amendments as may be deemed necessary by the Company. The Company shall be under no obligation to inform of the amendments to the brochure. By using or accessing this Brochure, the recipients agree with the Disclaimer without any qualification or limitation.